

Lower Thames Crossing

6.3 Environmental Statement Appendices Appendix 8.17 - Draft EPS mitigation licence application - great crested newts

(5 of 5)

APFP Regulation 5(2)(a)

Infrastructure Planning (Applications:
Prescribed Forms and Procedure)
Regulations 2009

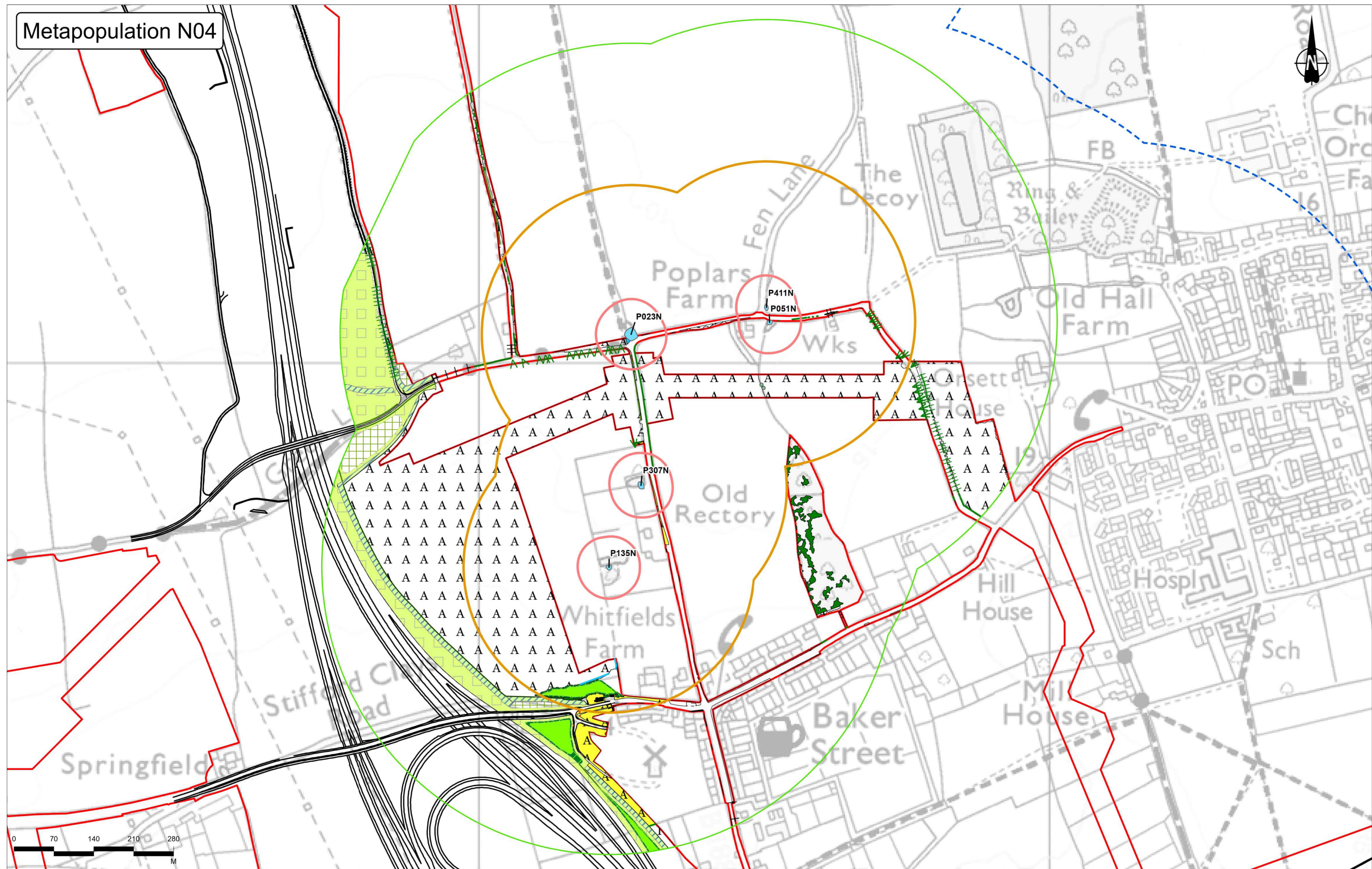
Volume 6

DATE: October 2022

Planning Inspectorate Scheme Ref: TR010032
Application Document Ref: TR010032/APP/6.3

VERSION: 1.0

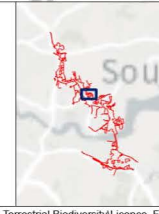
Metapopulation N04



Contains Ordnance Survey data. © Crown copyright and database rights 2022. Ordnance Survey 100030649

Rev	Status	Rev. Date	Purpose of revision	Drawn	Chkd	Apprv'd
P02	S8	27/09/2022	DCO Application	CD	HT	BF

- Legend**
- Order Limits
 - Ponds
 - 250m pond buffer
 - Route Alignment
 - Pond buffers
 - 500m pond buffer
 - GCN Survey Area
 - 50m pond buffer

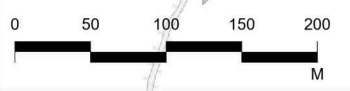


Client
national highways

Project
LOWER THAMES CROSSING

Status	DCO APPLICATION	Original Size	A3	Revision	P02
Application Document Number	TR010032/APP/6.2	Scale	1:6,000		
Drawing Title	Figure F1 - Final Development Metapopulation N04				
	Page 12 of 25				
Drawing Number	HE540039-CJV-EBD-SZP_EGNE0000000-DR-LE-60032				

Metapopulation N05



Contains Ordnance Survey data. © Crown copyright and database rights 2022. Ordnance Survey 100030649

Rev	Status	Rev. Date	Purpose of revision	Drawn	Chkd	Apprv'd
P02	S8	27/09/2022	DCO Application	CD	HT	BF

Legend	
Order Limits	Refugia
Route Alignment	Small hibernacula
GCN Survey Area	GCN Pond
Ponds	Non GCN Pond
50m pond buffer	Large hibernacula
250m pond buffer	
500m pond buffer	

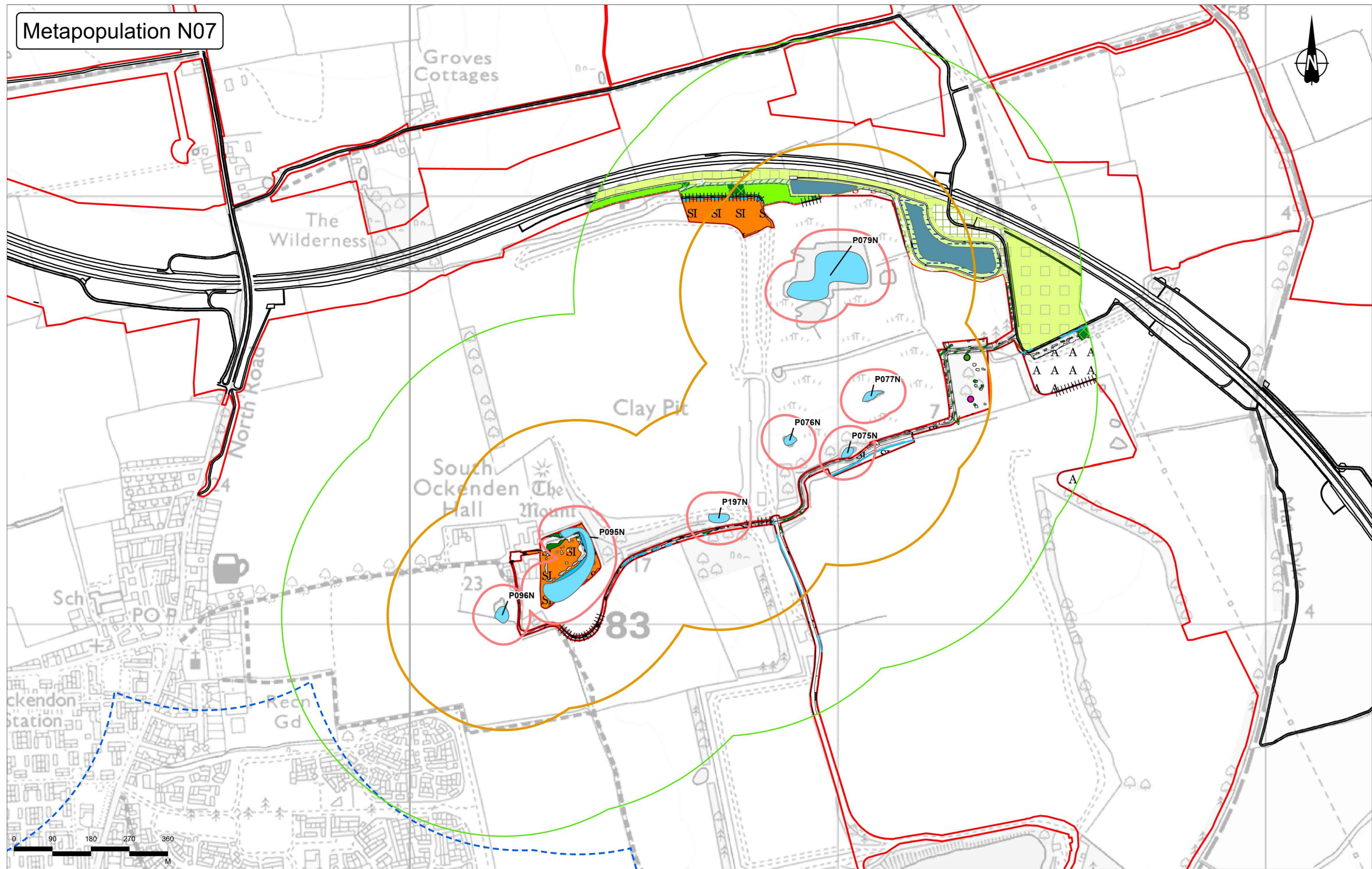
Client: national highways

Project: **LOWER THAMES CROSSING**

Status	DCO APPLICATION	Original Size	A3	Revision	P02
Application Document Number	TR010032/APP/6.2	Scale	1:5,000		
Drawing Title	Figure F1 - Final Development Metapopulation N05				
	Page 13 of 25				
Drawing Number	HE540039-CJV-EBD-SZP_EGNE00000000-DR-LE-60032				

Z:\Environment\Environmental Statement\08_Terrestrial Biodiversity\Licence_Figures\HE540039-CJV-EBD-SZP_EGNE00000000-DR-LE-60038 - Figure F1 Final Development\HE540039-CJV-EBD-SZP_EGNE00000000-DR-LE-60038 - Figure F1 Final Development.aprx

Metapopulation N07



- Legend**
- Order Limits
 - Ponds
 - 250m pond buffer
 - Mitigation**
 - Route Alignment
 - Pond buffers
 - 500m pond buffer
 - Refugia
 - GCN Survey Area
 - 50m pond buffer
 - Small hibernacula

P02	S8	27/09/2022	DCO Application	CD	HT	BF
Rev	Status	Rev. Date	Purpose of revision	Drawn	Chkd	Apprvd

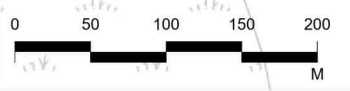
Client

Project
LOWER THAMES CROSSING

Status	DCO APPLICATION	Original Size	A3	Revision	P02
Application Document Number	TR010032/APP/6.2	Scale	1:8,000		
Drawing Title	Figure F1 - Final Development Metapopulation N07				
	Page 14 of 25				
Drawing Number	HE540039-CJV-EBD-SZP_EGNE00000000-DR-LE-60032				

Z:\Environment\Environmental Statement\08_Terrestrial Biodiversity\Licence_Figures\HE540039-CJV-EBD-SZP_EGNE00000000-DR-LE-60038 - Figure F1 Final Development\HE540039-CJV-EBD-SZP_EGNE00000000-DR-LE-60038 - Figure F1 Final Development.aprx

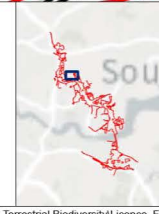
Metapopulation N09



Contains Ordnance Survey data. © Crown copyright and database rights 2022. Ordnance Survey 100030649

Rev	Status	Rev. Date	Purpose of revision	Drawn	Chkd	Apprv'd
P02	S8	27/09/2022	DCO Application	CD	HT	BF

Legend		Mitigation	
	Order Limits		Refugia
	Ponds		Small hibernacula
	Route Alignment		
	GCN Survey Area		
	250m pond buffer		
	500m pond buffer		
	50m pond buffer		

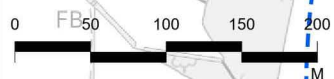


Client
national highways

Project
LOWER THAMES CROSSING

Status	DCO APPLICATION	Original Size	A3	Revision	P02
Application Document Number	TR010032/APP/6.2	Scale	1:5,000		
Drawing Title	Figure F1 - Final Development Metapopulation N09				
	Page 15 of 25				
Drawing Number	HE540039-CJV-EBD-SZP_EGNE0000000-DR-LE-60032				

Metapopulation N10



- Legend**
- Order Limits
 - Route Alignment
 - GCN Survey Area
 - Ponds
 - Pond buffers**
 - 50m pond buffer
 - 250m pond buffer
 - 500m pond buffer
 - Mitigation**
 - Non GCN Pond
 - Refugia
 - Small hibernacula

Rev	Status	Rev. Date	Purpose of revision	Drawn	Chkd	Apprv'd
P02	S8	27/09/2022	DCO Application	CD	HT	BF

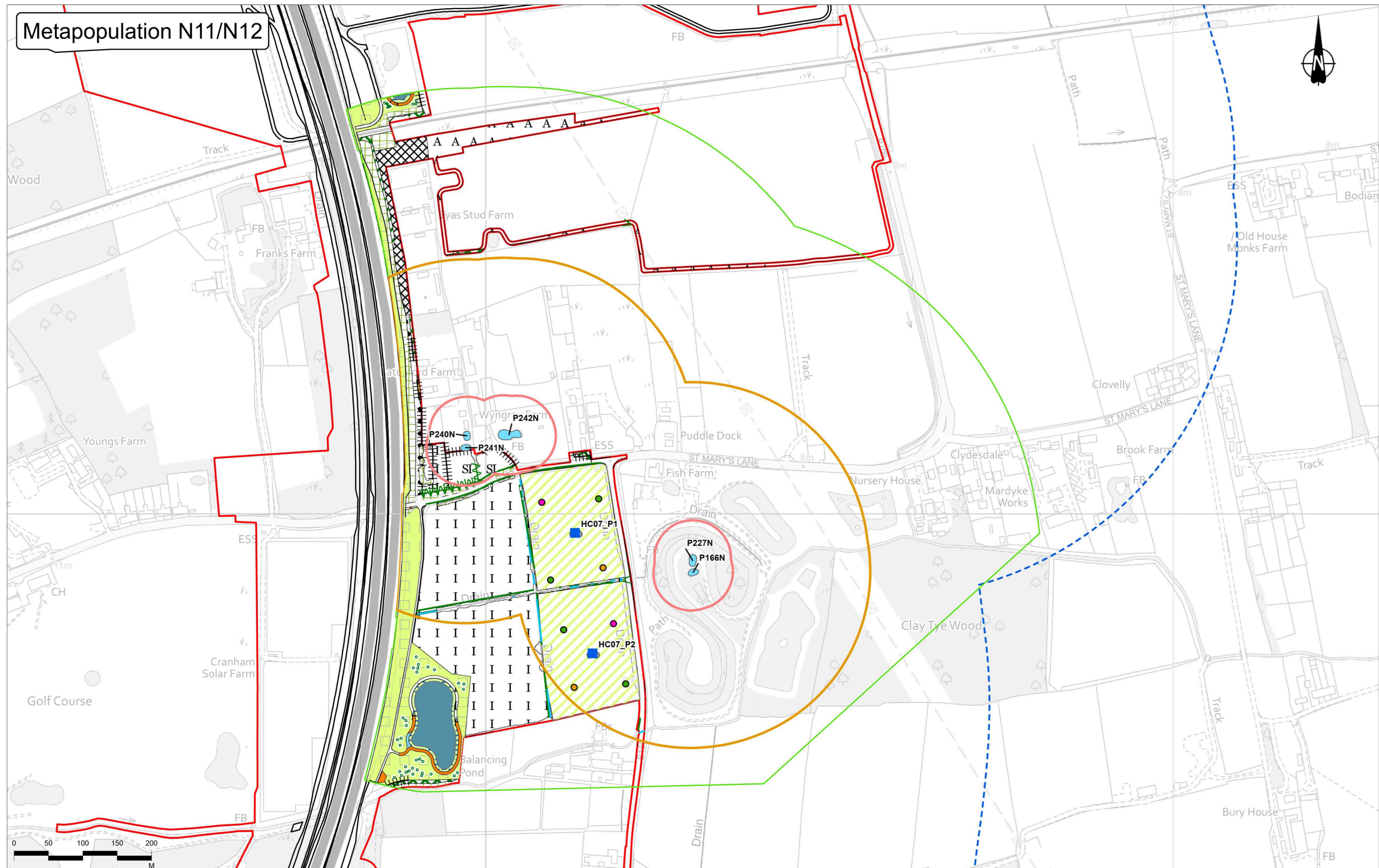
Client: **national highways**

Project: **LOWER THAMES CROSSING**

Status	DCO APPLICATION	Original Size	A3	Revision	P02
Application Document Number	TR010032/APP/6.2	Scale	1:5,000		
Drawing Title	Figure F1 - Final Development Metapopulation N10				
	Page 16 of 25				
Drawing Number	HE540039-CJV-EBD-SZP_EGNE0000000-DR-LE-60032				

Z:\Environment\Environmental Statement\08_Terrestrial Biodiversity\Licence_Figures\HE540039-CJV-EBD-SZP_EGNE0000000-DR-LE-60038 - Figure F1 Final Development\HE540039-CJV-EBD-SZP_EGNE0000000-DR-LE-60038 - Figure F1 Final Development.aprx

Metapopulation N11/N12



Contains Ordnance Survey data. © Crown copyright and database rights 2022. Ordnance Survey 100030649

Rev	Status	Rev. Date	Purpose of revision	Drawn	Chkd	Apprv'd
P02	S8	27/09/2022	DCO Application	CD	HT	BF

Legend	
Order Limits	Small hibernacula
GCN Survey Area	Non GCN Pond
Ponds	Large hibernacula
50m pond buffer	Refugia
250m pond buffer	
500m pond buffer	

Client: national highways

Project: LOWER THAMES CROSSING

Status	DCO APPLICATION	Original Size	A3	Revision	P02
Application Document Number	TR010032/APP/6.2	Scale	1:5,000		
Drawing Title	Figure F1 - Final Development Metapopulation N11/N12				
	Page 17 of 25				
Drawing Number	HE540039-CJV-EBD-SZP_EGNE00000000-DR-LE-60032				

Metapopulation N13



Contains Ordnance Survey data. © Crown copyright and database rights 2022. Ordnance Survey 100030649

Rev	Status	Rev. Date	Purpose of revision	Drawn	Chckd	Apprvd
P02	S8	27/09/2022	DCO Application	CD	HT	BF

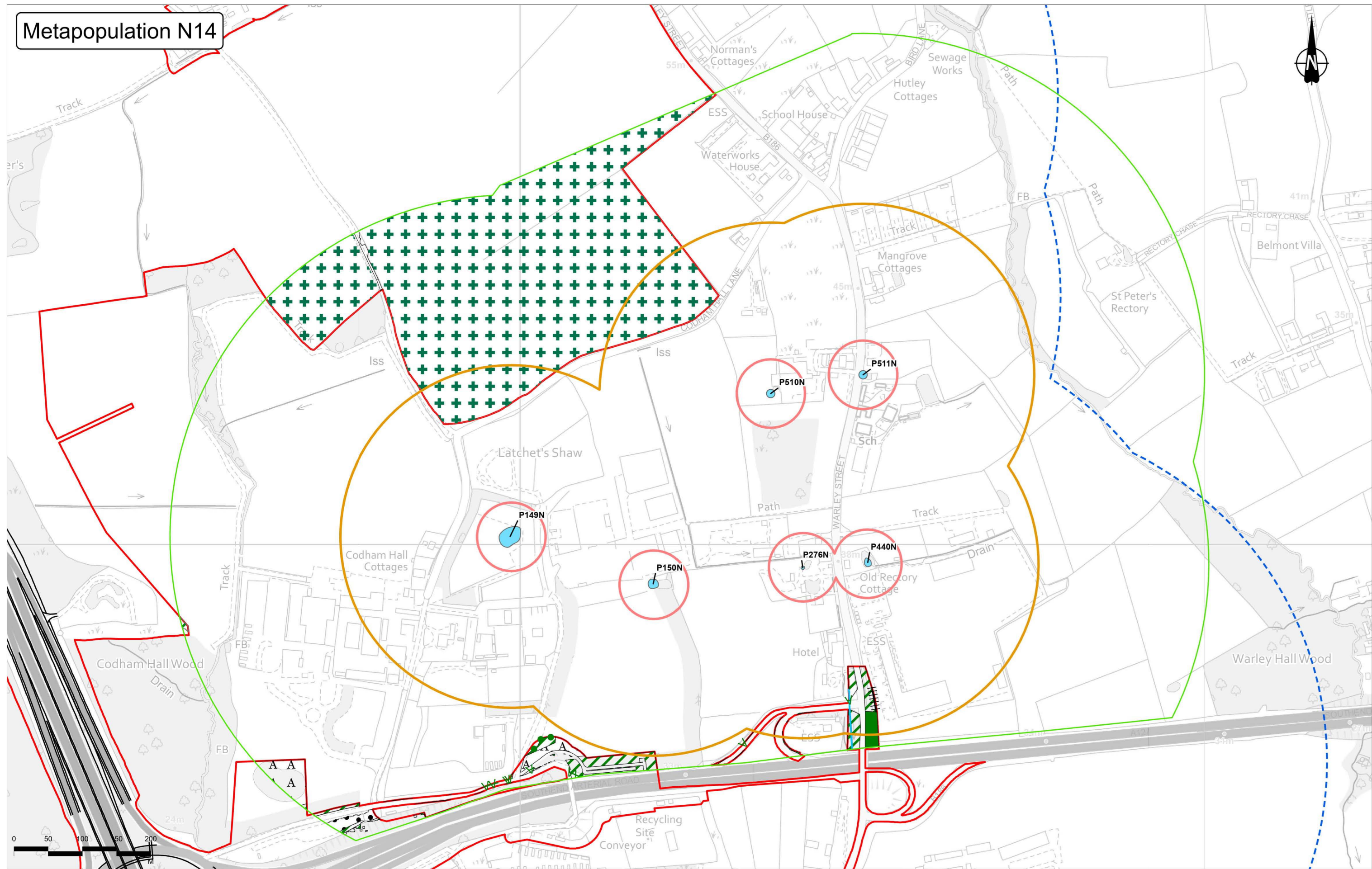
- Legend**
- ▭ Order Limits
 - ▭ Route Alignment
 - ▭ GCN Survey Area
 - ▭ Ponds
 - ▭ Pond buffers
 - ▭ 50m pond buffer
 - ▭ 250m pond buffer
 - ▭ 500m pond buffer
 - Refugia
 - ▭ Mitigation
 - ▭ Non GCN Pond
 - Large hibernacula

Client: national highways

Project: LOWER THAMES CROSSING

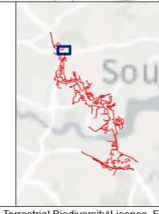
Status	DCO APPLICATION	Original Size	A3	Revision	P02
Application Document Number	TR010032/APP/6.2	Scale	1:6,000		
Drawing Title	Figure F1 - Final Development Metapopulation N13				
	Page 18 of 25				
Drawing Number	HE540039-CJV-EBD-SZP_EGNE00000000-DR-LE-60032				

Metapopulation N14



Legend	
▬ Order Limits	■ Ponds
▬ Route Alignment	▬ 500m pond buffer
▬ GCN Survey Area	▬ 50m pond buffer
● Ponds	▬ 250m pond buffer

Rev	Status	Rev. Date	Purpose of revision	Drawn	Checkd	Apprvd
P02	S8	27/09/2022	DCO Application	CD	HT	BF



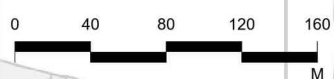
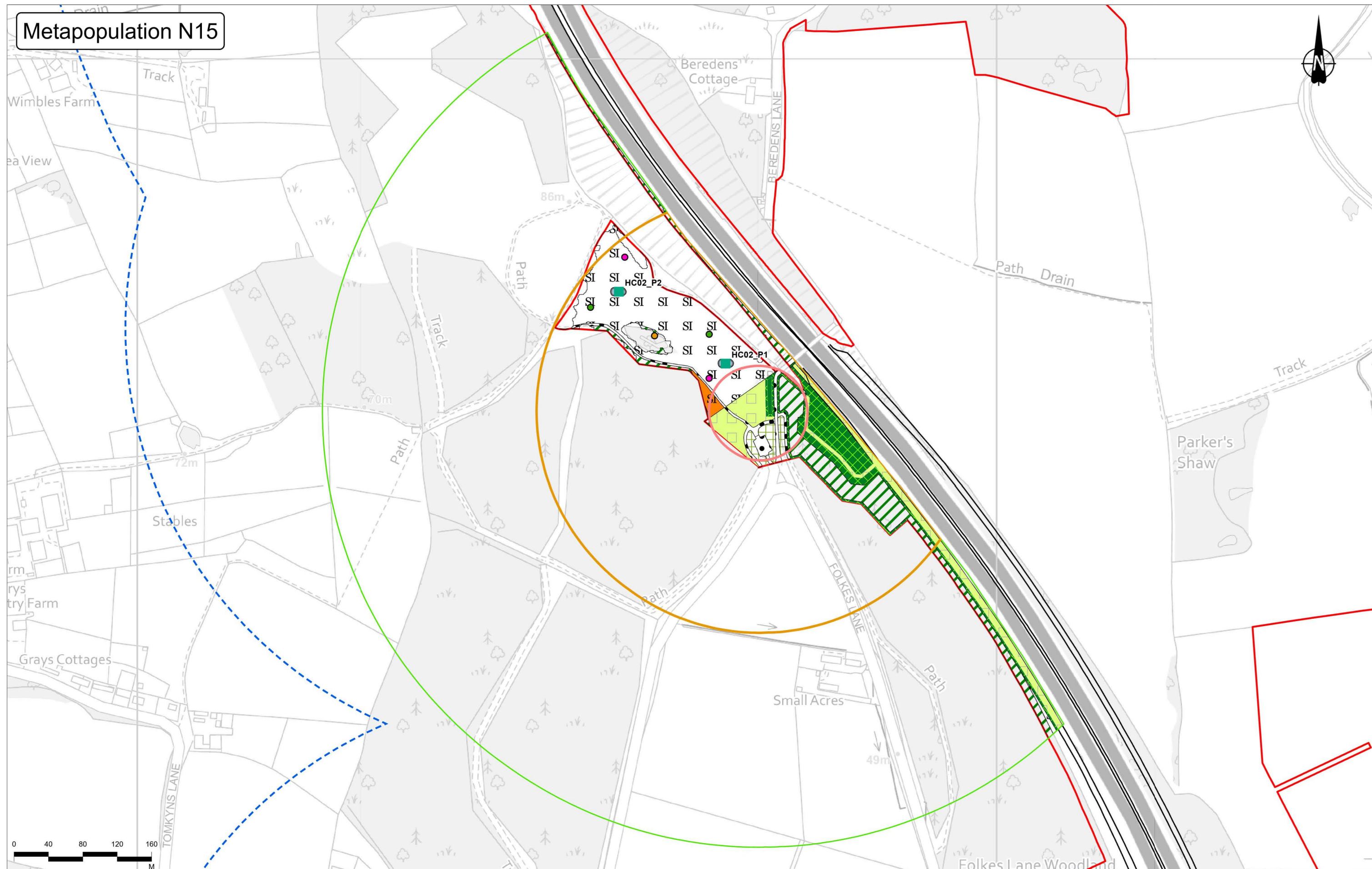
Client
 national highways

Project
LOWER THAMES CROSSING

Status	DCO APPLICATION	Original Size	A3	Revision	P02
Application Document Number	TR010032/APP/6.2	Scale	1:5,000		
Drawing Title	Figure F1 - Final Development Metapopulation N14				
	Page 19 of 25				
Drawing Number	HE540039-CJV-EBD-SZP_EGNE00000000-DR-LE-60032				

Z:\Environment\Environmental Statement\08_Terrestrial Biodiversity\Licence_Figures\HE540039-CJV-EBD-SZP_EGNE00000000-DR-LE-60038 - Figure F1 Final Development\HE540039-CJV-EBD-SZP_EGNE00000000-DR-LE-60038 - Figure F1 Final Development.aprx

Metapopulation N15



- Legend**
- Order Limits
 - Pond buffers
 - 500m pond buffer
 - Large hibernacula
 - Route Alignment
 - 50m pond buffer
 - Mitigation
 - Refugia
 - GCN Survey Area
 - 250m pond buffer
 - GCN Pond
 - Small hibernacula

P02	S8	27/09/2022	DCO Application	CD	HT	BF
Rev	Status	Rev. Date	Purpose of revision	Drawn	Chkd	Apprv'd

national highways

Client

Project

LOWER THAMES CROSSING

Status

DCO APPLICATION

Application Document Number

TR010032/APP/6.2

Drawing Title

Figure F1 - Final Development Metapopulation N15

Page 20 of 25

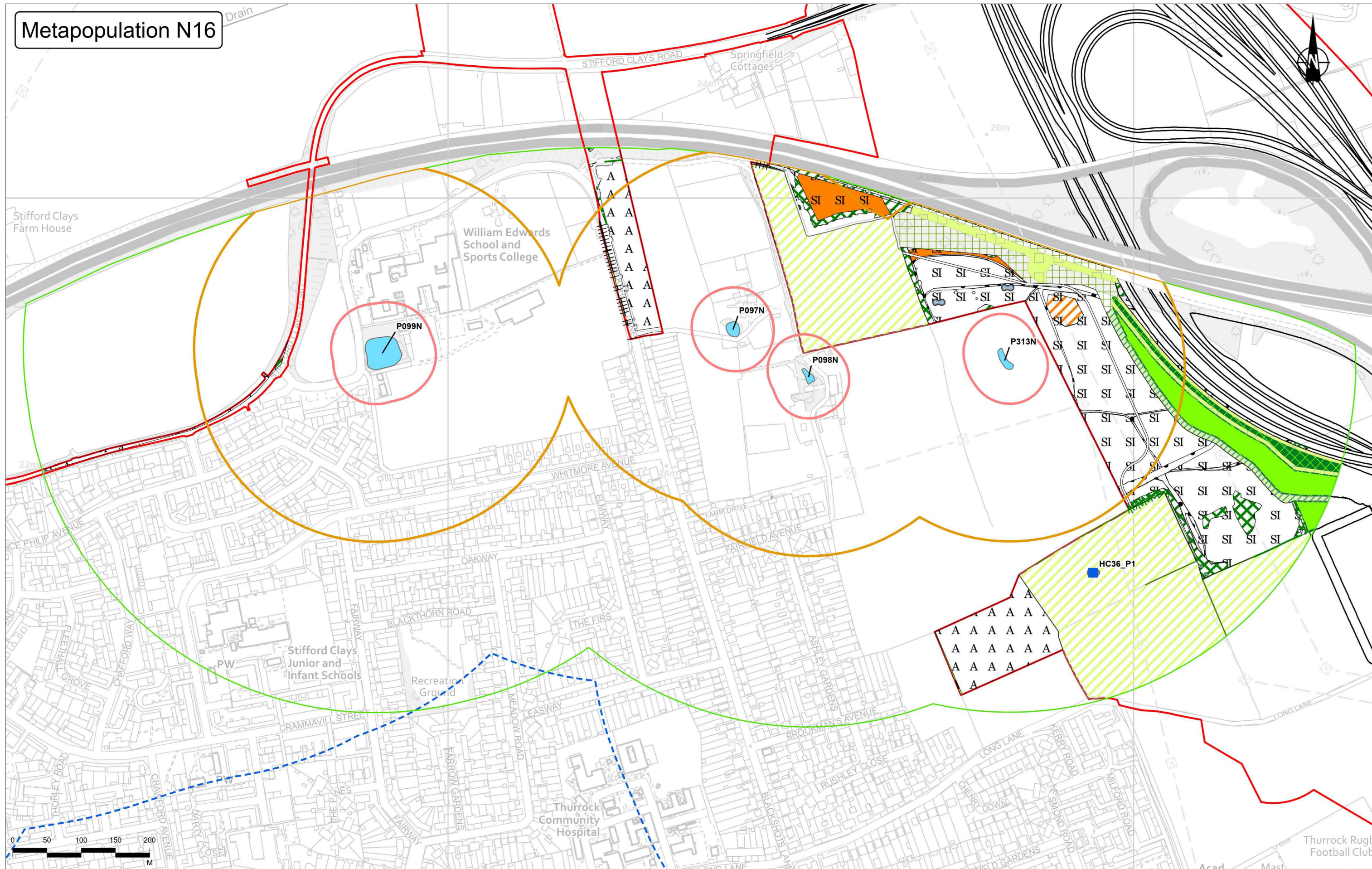
Drawing Number

HE540039-CJV-EBD-SZP_EGNE0000000-DR-LE-60032

Original Size	Revision
A3	P02
Scale	1:4,000

Z:\Environment\Environmental Statement\08_Terrrestrial Biodiversity\Licence_Figures\HE540039-CJV-EBD-SZP_EGNE0000000-DR-LE-60038 - Figure F1 Final Development\HE540039-CJV-EBD-SZP_EGNE0000000-DR-LE-60038 - Figure F1 Final Development.aprx

Metapopulation N16

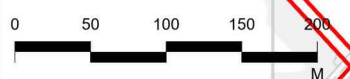
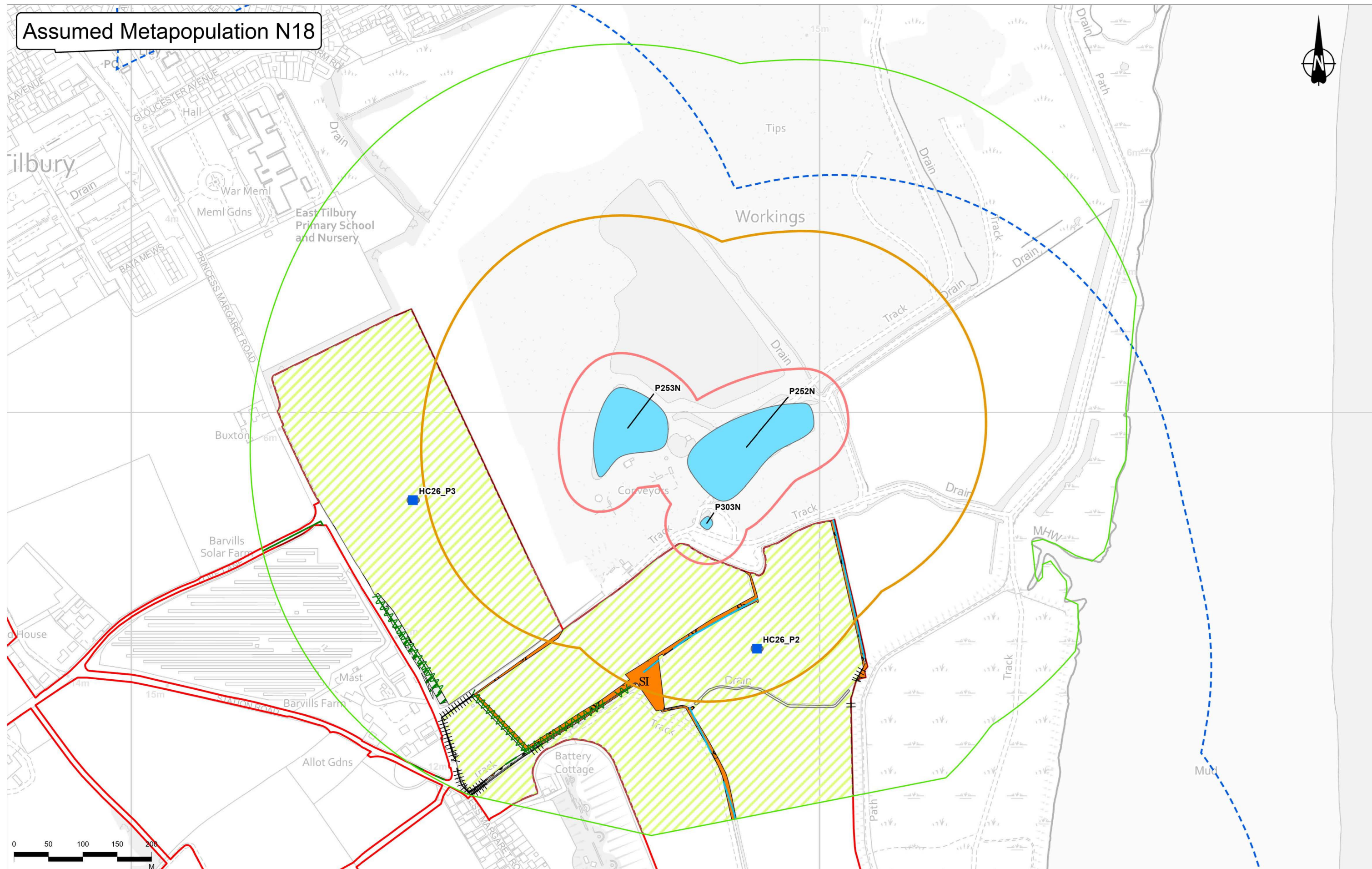


- Legend**
- Order Limits
 - Route Alignment
 - GCN Survey Area
 - Ponds
 - 50m pond buffer
 - 250m pond buffer
 - 500m pond buffer
 - Non GCN Pond

P02	S8	27/09/2022	DCO Application	CD	HT	BF
Rev	Status	Rev. Date	Purpose of revision	Drawn	Checked	Approved

	Client		Status	DCO APPLICATION	Original Size	A3	Revision	P02	
	Project		Application Document Number	TR010032/APP/6.2	Scale	1:5,000			
LOWER THAMES CROSSING		Drawing Title		Figure F1 - Final Development Metapopulation N16				Page 21 of 25	
		Drawing Number		HE540039-CJV-EBD-SZP_EGNE0000000-DR-LE-60032					

Assumed Metapopulation N18



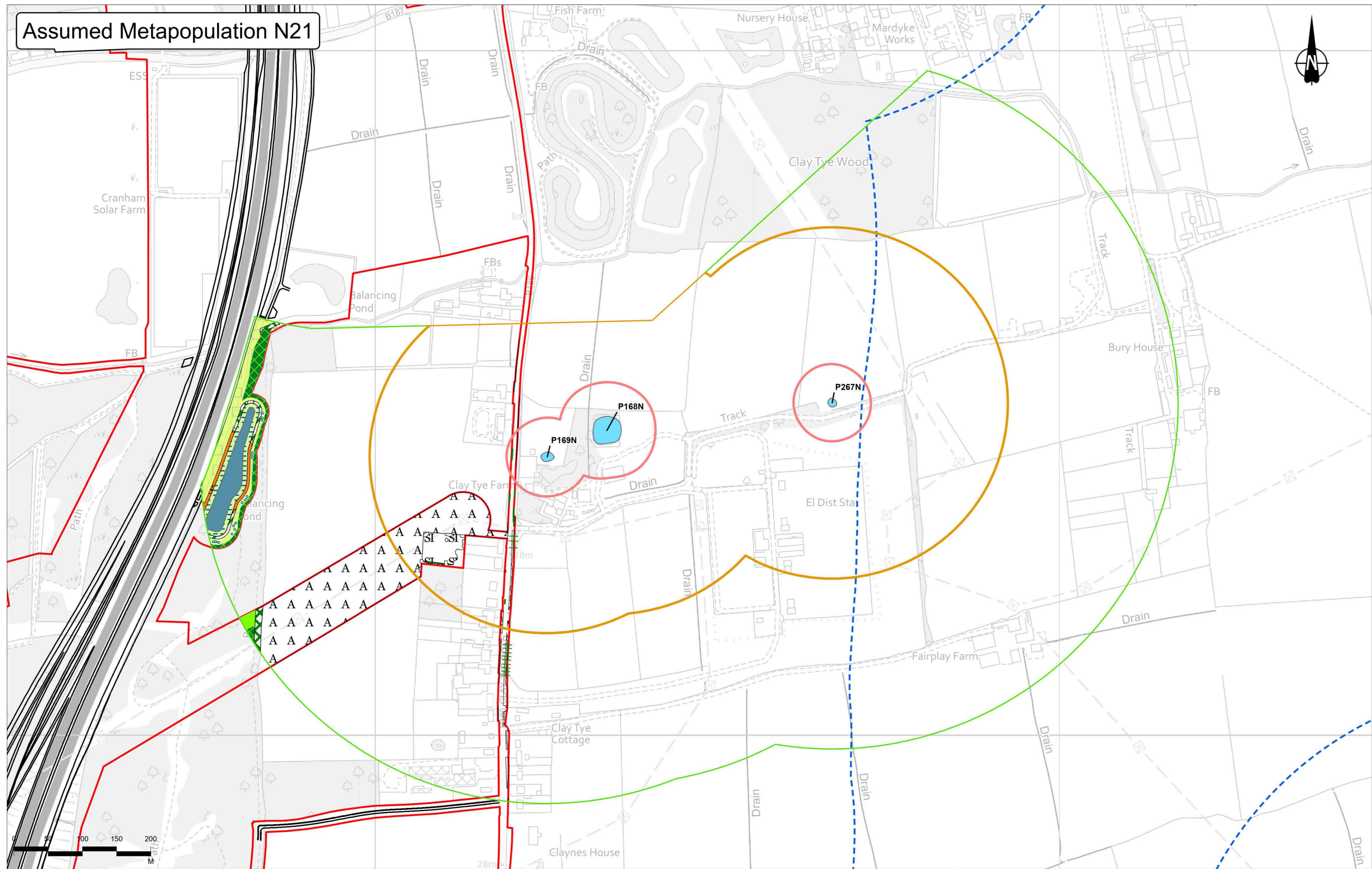
- Legend**
- Order Limits
 - GCN Survey Area
 - Ponds
 - 500m pond buffer
 - 250m pond buffer
 - Mitigation
 - Non GCN Pond

Rev	Status	Rev. Date	Purpose of revision	Drawn	Chkd	Apprvd
P02	S8	27/09/2022	DCO Application	CD	HT	BF

 LOWER THAMES CROSSING	Client	DCO APPLICATION	Original Size A3	Revision P02
	Application Document Number	TR010032/APP/6.2	Scale 1:5,000	
	Drawing Title	Figure F1 - Final Development Assumed Metapopulation N18		
Drawing Number		HE540039-CJV-EBD-SZP_EGNE0000000-DR-LE-60032		

Z:\Environment\Environmental Statement\08_Terrrestrial Biodiversity\Licence_Figures\HE540039-CJV-EBD-SZP_EGNE0000000-DR-LE-60038 - Figure F1 Final Development\HE540039-CJV-EBD-SZP_EGNE0000000-DR-LE-60038 - Figure F1 Final Development.aprx

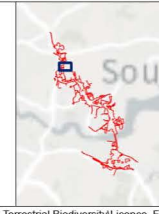
Assumed Metapopulation N21



Contains Ordnance Survey data. © Crown copyright and database rights 2022. Ordnance Survey 100030649

Rev	Status	Rev. Date	Purpose of revision	Drawn	Chkd	Apprv'd
P02	S8	27/09/2022	DCO Application	CD	HT	BF

- Legend**
- Order Limits
 - Ponds
 - 250m pond buffer
 - 500m pond buffer
 - Route Alignment
 - 50m pond buffer
 - GCN Survey Area

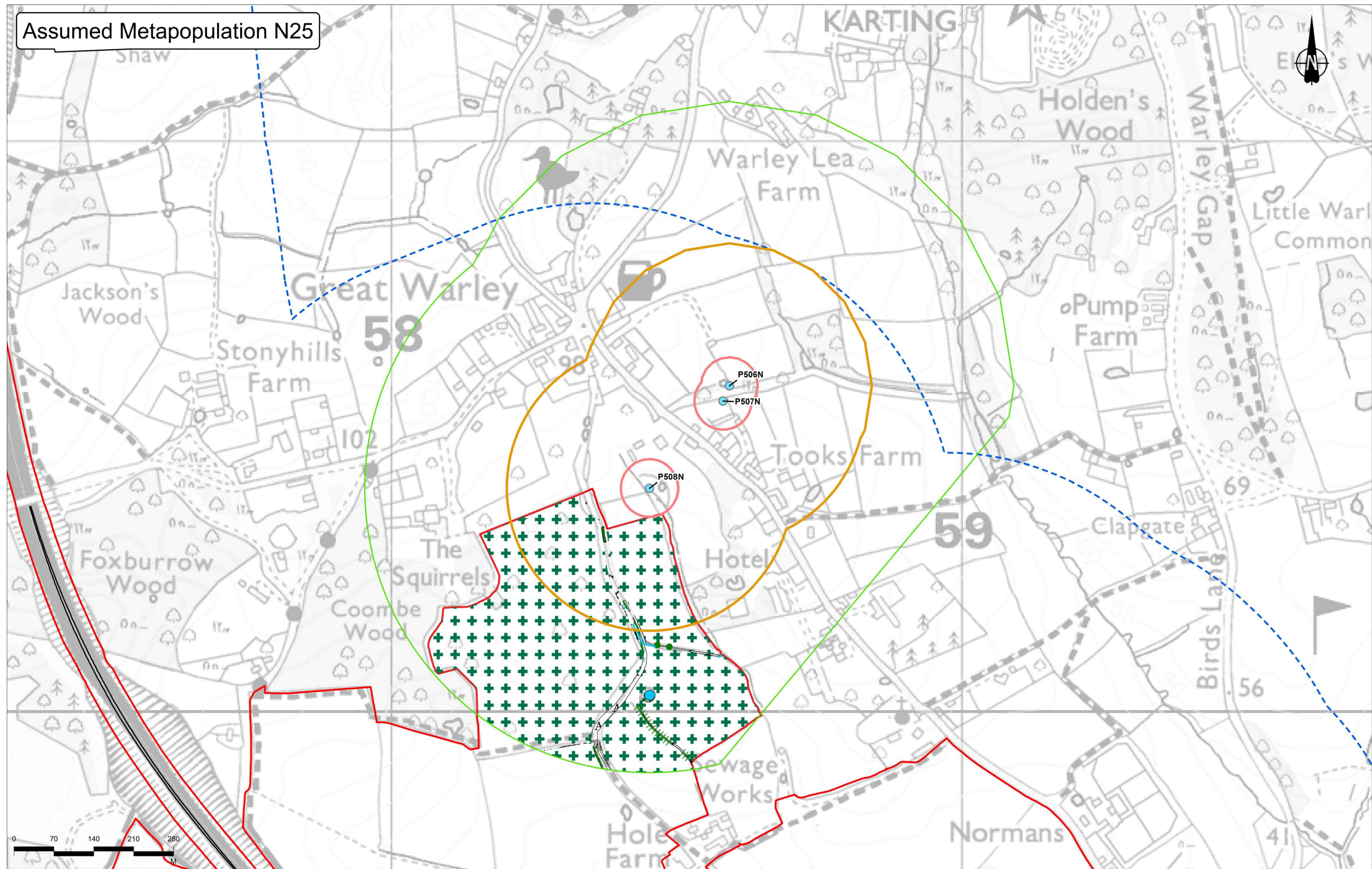


Client
national highways

Project
LOWER THAMES CROSSING

Status	DCO APPLICATION	Original Size	A3	Revision	P02
Application Document Number	TR010032/APP/6.2	Scale	1:5,000		
Drawing Title	Figure F1 - Final Development Assumed Metapopulation N21				
	Page 23 of 25				
Drawing Number	HE540039-CJV-EBD-SZP_EGNE00000000-DR-LE-60032				

Assumed Metapopulation N25



Contains Ordnance Survey data. © Crown copyright and database rights 2022. Ordnance Survey 100030649

Rev	Status	Rev. Date	Purpose of revision	Drawn	Chkd	Apprv'd
P02	S8	27/09/2022	DCO Application	CD	HT	BF

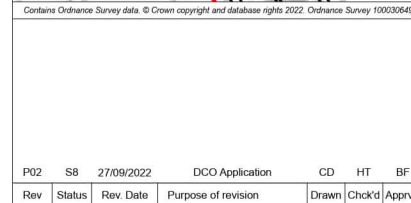
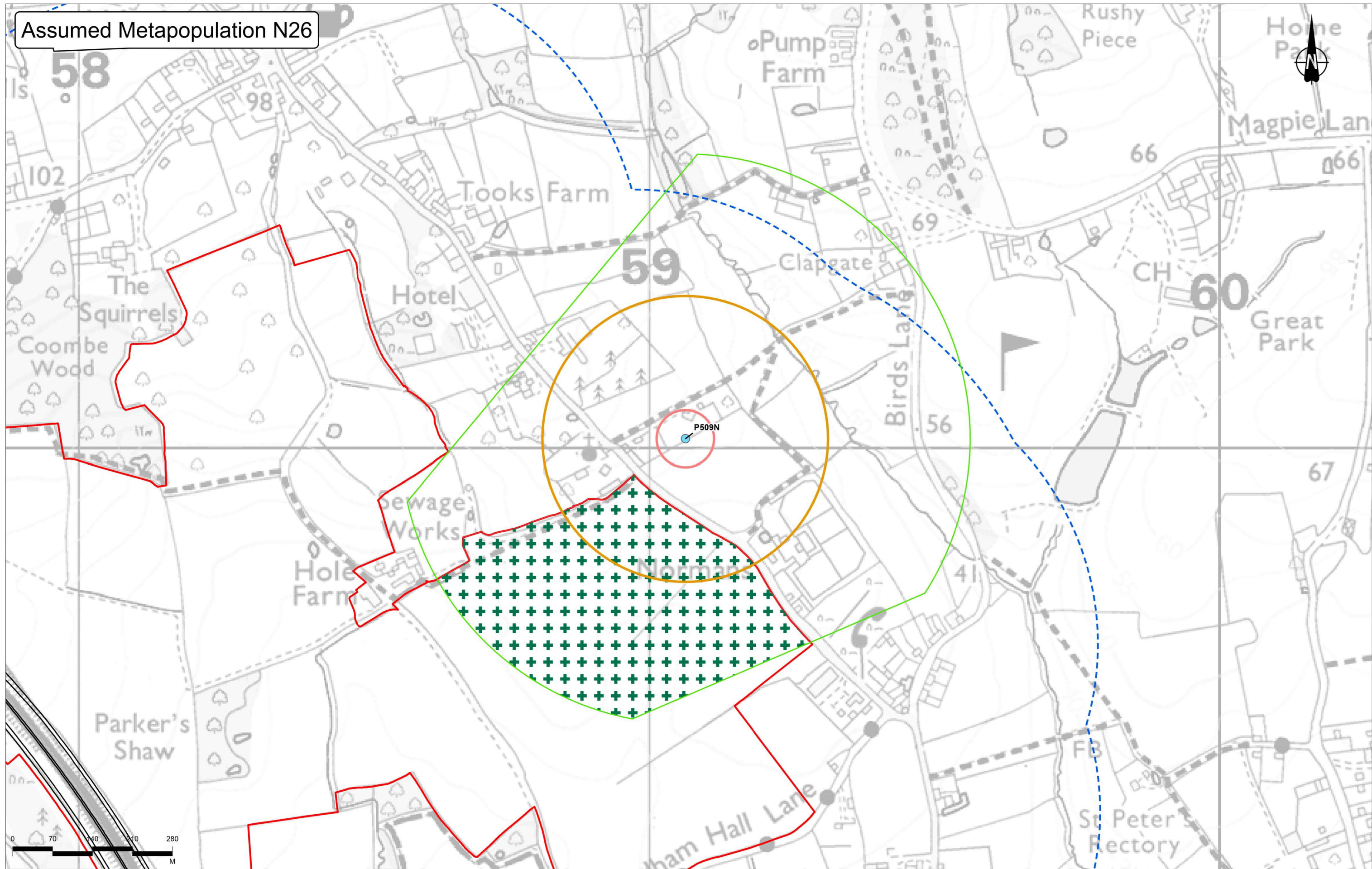
- Legend**
- Order Limits
 - Route Alignment
 - GCN Survey Area
 - Ponds
 - + Pond buffers
 - 250m pond buffer
 - 500m pond buffer
 - 50m pond buffer

Client
national highways

Project
LOWER THAMES CROSSING

Status	DCO APPLICATION	Original Size	A3	Revision	P02
Application Document Number	TR010032/APP/6.2	Scale	1:6,000		
Drawing Title	Figure F1 - Final Development Assumed Metapopulation N25				
	Page 24 of 25				
Drawing Number	HE540039-CJV-EBD-SZP_EGNE00000000-DR-LE-60038				

Assumed Metapopulation N26



- Legend**
- Order Limits
 - GCN Survey Area
 - Ponds
 - Pond buffers**
 - 250m pond buffer
 - 500m pond buffer
 - 50m pond buffer

P02	S8	27/09/2022	DCO Application	CD	HT	BF
Rev	Status	Rev. Date	Purpose of revision	Drawn	Chkd	Apprv'd

Client: national highways

Project: LOWER THAMES CROSSING

Status	DCO APPLICATION	Original Size	A3	Revision	P02
Application Document Number	TR010032/APP/6.2	Scale	1:6,000		
Drawing Title	Figure F1 - Final Development Assumed Metapopulation N26				
	Page 25 of 25				
Drawing Number	HE540039-CJV-EBD-SZP_EGNE00000000-DR-LE-60032				

If you need help accessing this or any other National Highways information, please call **0300 123 5000** and we will help you.

© Crown copyright 2022.

You may re-use this information (not including logos) free of charge in any format or medium, under the terms of the Open Government Licence. To view this licence:

visit www.nationalarchives.gov.uk/doc/open-government-licence/

write to the **Information Policy Team, The National Archives, Kew, London TW9 4DU**, or email psi@nationalarchives.gsi.gov.uk.

Mapping (where present): © Crown copyright and database rights 2022 OS 100030649. You are permitted to use this data solely to enable you to respond to, or interact with, the organisation that provided you with the data. You are not permitted to copy, sub-licence, distribute or sell any of this data to third parties in any form.

If you have any enquiries about this publication email info@nationalhighways.co.uk or call **0300 123 5000**.*

*Calls to 03 numbers cost no more than a national rate call to an 01 or 02 number and must count towards any inclusive minutes in the same way as 01 and 02 calls.

These rules apply to calls from any type of line including mobile, BT, other fixed line or payphone. Calls may be recorded or monitored.

Printed on paper from well-managed forests and other controlled sources when issued directly by National Highways.

Registered office Bridge House, 1 Walnut Tree Close, Guildford GU1 4LZ

National Highways Company Limited registered in England and Wales number 09346363